

<b>Facades available:</b>	
Lachlan, Barrington, Flinders	
Cooper, Nepean	
<b>Overall home width</b>	<b>12.47m</b>
<b>Overall home length</b>	<b>23.63m</b>

Residence	203.3m <sup>2</sup>	21.9sq
Garage	36.3m <sup>2</sup>	3.9sq
Porch	6.1m <sup>2</sup>	0.7sq
Alfresco	22.4m <sup>2</sup>	2.4sq
<b>Total</b>	<b>268.1m<sup>2</sup></b>	<b>28.9sq</b>

**FLOORPLAN OPTIONS**

We personalise our floorplans. Talk to us about our huge range of ready-to-go design options.

Listed details based on Lachlan facade floorplan (illustrated)

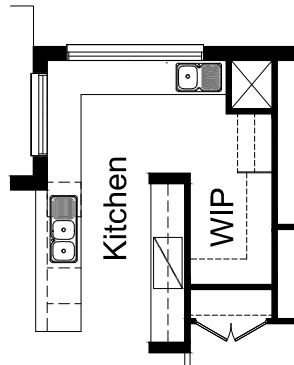
\*Copyright conditions. All photos and illustrations are representative only. Floor plans and specifications may be varied by Burbank without notice, the dimensions are diagrammatic only and a Building Contract with final drawings will display correct dimensions and detail. All designs are the property of Burbank and must not be used, reproduced, copied or varied, wholly or in part without written permission from an authorised Burbank representative. Copyright Burbank Australia (NSW) Pty Ltd. ABN 88 610 822 770. NSW BL 295627C ACT BL 2016566.

**Call 13 BURBANK**  
**Visit burbank.com.au**

**OPTION K1**

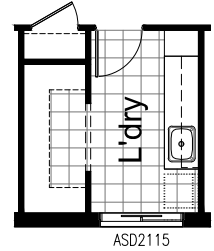
Provide Kitchen upgrade with Butlers pantry. Option includes relocating Ref space, 900mm retractable rangehood, 900mm cooktop with under bench oven. 450mm drawer unit, 1no. dishwasher provision, 1no. microwave provision with pot drawer, 5no. 900mm base cabinets, 2no 800mm base cabinets, 1no. 600mm blind carcass base cabinet, 1no. 600mm base cabinet, 2no. 900mm overhead cabinets, 1no. 900mm open shelf above ref space, additional single bowl sink, additional tiled splashback and bench top to suit. AFW1224 fixed window in lieu of standard as shown.

NOTE: Not available in conjunction with Option ENS-2 & ENS-3



**OPTION LD2**

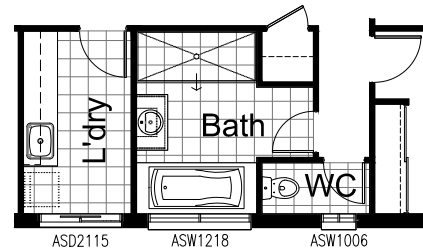
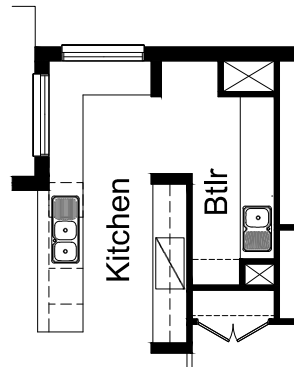
Provide upgrade Laundry option laminate base cabinets and stainless steel inset trough, 2no. 800mm base cabinets, 1no. 350mm base cabinet, 2no. 800mm overhead cabinets, 1no. 350mm overhead cabinet. 1no. 400mm full height Broom cabinet, additional tiled splashback and bench top to suit. Delete Store in Laundry. NOTE: Not available in conjunction with Option B-1



**OPTION K2**

Provide Kitchen upgrade with Butlers pantry. Option includes 900mm retractable rangehood, 900mm cooktop with under bench oven. 450mm drawer unit, 1no. dishwasher provision, 1no. microwave provision with pot drawer, 7no. 900mm base cabinets, 1no 800mm base cabinets, 1no. 600mm blind carcass base cabinet, 1no. 600mm base cabinet, 1no. 350mm base cabinet, 1no. 900mm open shelf above ref space, additional single bowl sink, additional tiled splashback and bench top to suit.

NOTE: Not available in conjunction with Option ENS-2 & ENS-3

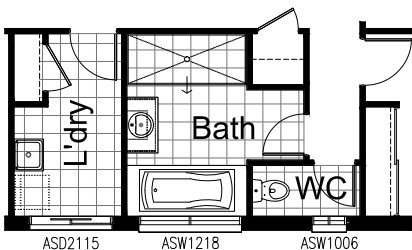
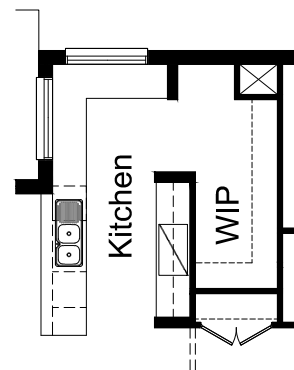


**OPTION LD3**

Provide upgrade Laundry option laminate base cabinets and stainless steel inset trough, 2no. 800mm base cabinets, 1no. 700mm base cabinet, 2no. 800mm overhead cabinets, 1no. 700mm overhead cabinet. Additional tiled splashback and bench top to suit. Delete Store in Laundry & option also changes the layout of WC and removes walk in Linen to Laundry and standard Linen to passage and adds small walk in Linen to passage near bathroom. Change window in Bathroom to ASD1218 in lieu of standard. NOTE: Only available with Option B-1

**OPTION K3**

Provide alternative Kitchen layout. Option includes 900mm retractable rangehood, 900mm cooktop with under bench oven. 450mm drawer unit, 1no. dishwasher provision, 1no. microwave provision with pot drawer, 1no. 900mm base cabinet, 2no 800mm base cabinets, 1no. 600mm blind carcass base cabinet, 2no. 700mm base cabinets, 2no. 700mm overhead cabinets, 1no. 450mm base cabinet, & additional bench top to suit.



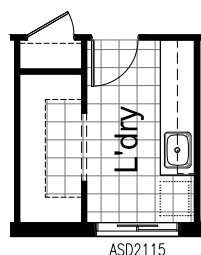
**OPTION B-1**

Provide upgrade Bathroom option including 2100mm x 900mm tiled shower base, 982mm vanity unit with single bowl, 1675mm bath with tiled hob. Option also changes the layout of WC and removes walk in Linen to Laundry and standard Linen to passage and adds small walk in Linen to passage near bathroom. Change window in Bathroom to ASD1218 in lieu of standard. NOTE: Not available in conjunction with Option IP1-1

**OPTION LD1**

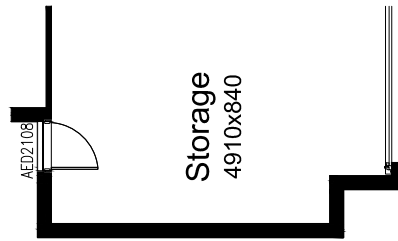
Provide upgrade Laundry option laminate base cabinets and stainless steel inset trough, 2no. 800mm base cabinets, 1no. 700mm base cabinet, 2no. 800mm overhead cabinets, 1no. 700mm overhead cabinet. Additional tiled splashback and bench top to suit. Delete Store in Laundry.

NOTE: Not available in conjunction with Option B-1



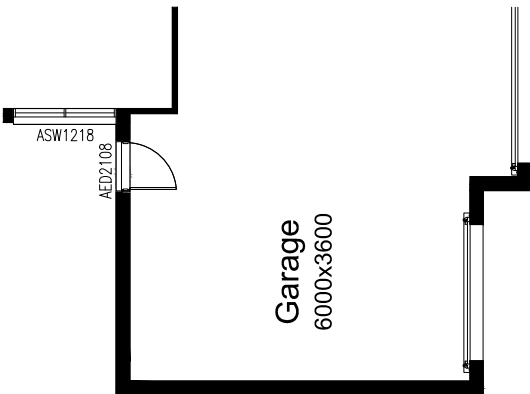
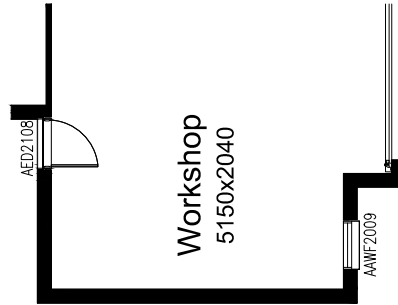
**OPTION G1**

Provide extension to Garage to create additional Storage area. Increases area by 4.53m<sup>2</sup>. Increases width by 840mm.



**OPTION G2**

Provide extension to Garage to create Workshop area including additional 2057 x 850 aluminium feature awning window to suit. Increases width by 2040mm. Increases area by 11.48m<sup>2</sup>.

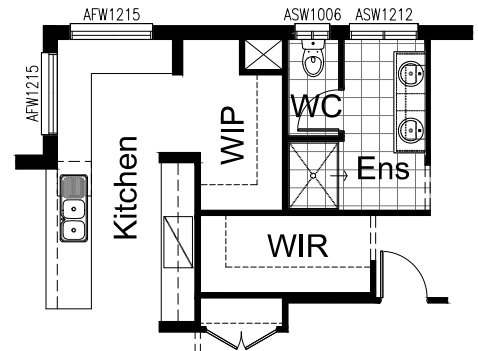
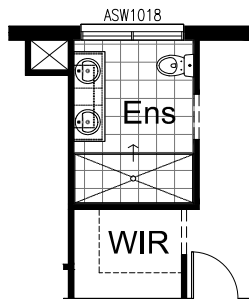


**OPTION G3**

Provide triple car Garage including additional Garage door as per colour selection. Relocate Bed 2 window to suit. Increases area by 24.26m<sup>2</sup>. Increases width by 3600mm.

**OPTION ENS1**

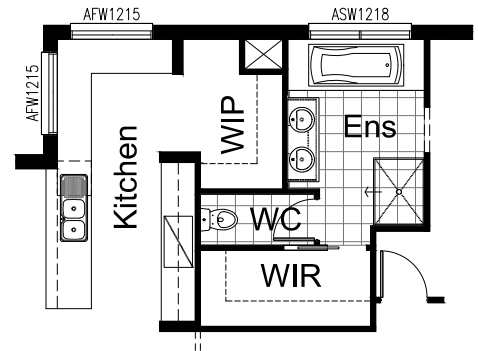
Provide upgrade Ensuite option with rearranged layout including 2100x900mm tiled shower base, 1582mm vanity unit with double basin. Provide ASW1018 window in lieu of standard as shown. Option takes 220mm of length from Bed 1.



**OPTION ENS2**

Provide upgrade Ensuite option with rearranged layout including 1200x900mm tiled shower base, 1782mm vanity unit with double basin. Enclosed WC and enlarged walk in robe. Provide ASW1006 window to enclosed WC and ASW1212 window in lieu of standard as shown. Option takes 520mm of length to Bed 1 and 940mm width from WIP.

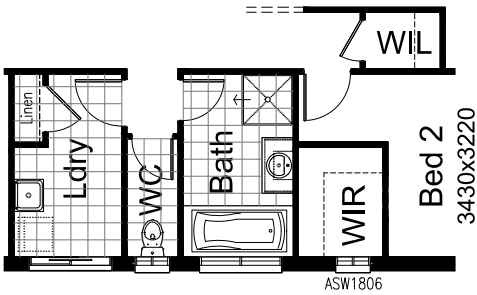
NOTE: Not available in conjunction with Options K1 & K2



**OPTION ENS3**

Provide upgrade Ensuite option with rearranged layout including 1200x900mm tiled shower base, 1482mm vanity unit with double basin, 1675mm bath and tiled hob, enclosed WC and enlarged walk in robe. Provide ASW1218 window in lieu of standard as shown. Option takes 520mm of length to Bed 1 and 1310mm width from WIP, and also removed Coats cupboard from Entry.

NOTE: Not available in conjunction with Options K1 & K2



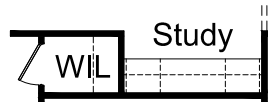
**OPTION IP1-1**

Provide floor plan option including Walk-in Robe to Bed 2. Option removes Walk-in Linen to Laundry and standard Lienn to Passage and moves WC in between Bathroom and Laundry. Provide ASW1806 window to Bed 2 WIR as shown. Option adds 190mm of length to Bed 2.

NOTE: Not available in conjunction with Option B-1

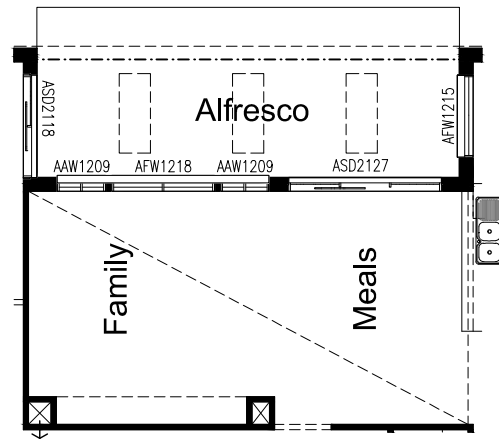
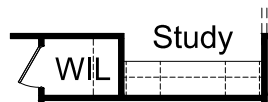
**OPTION IP1-2**

Provide floor plan option with built-in desk and cabinetry to Study Nook including 600mm deep 32mm thick laminate bench top, 2No. 600mm wide single drawer units, 2No. full-width 300mm deep open shelves above.



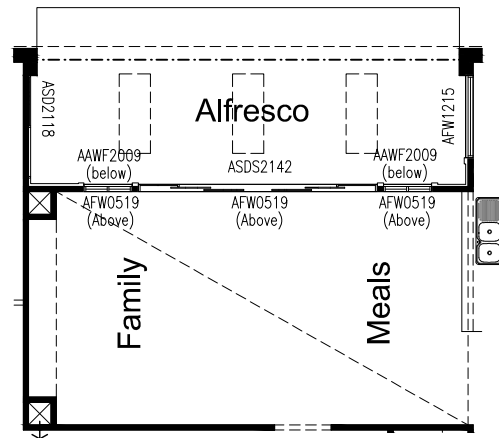
**OPTION IP1-3**

Provide floor plan option with built-in Entertainment Unit to Family Room Alcove including 600mm deep 32mm thick laminate bench top with 3No. 600mm wide drawers beneath, 2No. 700mm wide full-height cabinets, 2No. 900mm wide overhead cabinets with lift-up doors.



**OPTION IP1-4**

Provide floor plan option with raised ceiling to Meals / Family room and raked ceiling to Alfresco with 2no. AFW0509 fixed highlight windows, 1no. AFW0518 fixed highlight window and 1no. AFW0528 fixed highlight window. Option also removes 2no. timber posts to Alfresco with full span steel beam and 3no. fixed skylights to roof over.



**OPTION IP1-5**

Provide floor plan option with rearranged alcove to Family room and raised ceiling to Meals / Family room and raked ceiling to Alfresco with 2no. AAWF2009 awning windows, 1no. ASD2142 stacker sliding door and 3no. AFW0519 fixed highlight windows. option also removes 2no. timber posts to Alfresco with full-span steel beam and 3no. fixed skylights to roof over.

**OPTION IP1-6**

Provide floor plan option with built-in entertainment unit to rearranged Family room alcove including 600mm deep 32mm laminated bench top with 3no. 600mm drawer beneath, 2no. 600mm wide full-height cabinets, 2no. 900mm wide overhead cabinets with lift-up doors. Note: Only available in conjunction with option IP1-5

